

This is historical material "frozen in time". The website is no longer updated and links to external websites and some internal pages may not work.



Infographic: The Screening Process for Refugee Entry into the United States

NOVEMBER 20, 2015 AT 7:09 PM ET BY AMY POPE

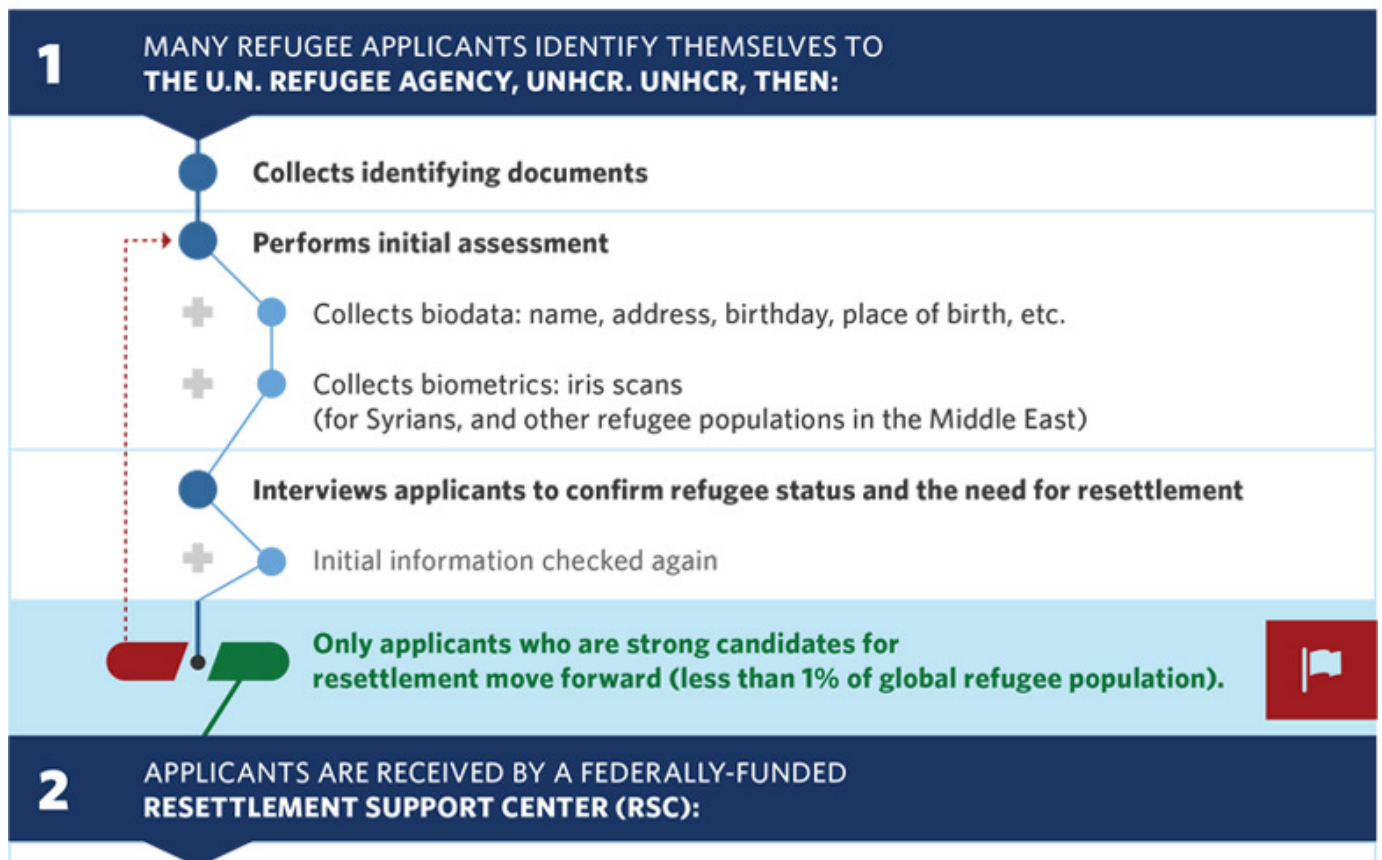


Summary: A step-by-step guide to the rigorous process for refugee entry into the U.S.

Refugees undergo more rigorous screening than anyone else we allow into the United States. Here's what the screening process looks like for them:

THE SCREENING PROCESS

FOR REFUGEE ENTRY INTO THE UNITED STATES



- Collects identifying documents
- Creates an applicant file
- Compiles information to conduct biographic security checks

3

BIOGRAPHIC SECURITY CHECKS START WITH ENHANCED INTERAGENCY SECURITY CHECKS:

REFUGEES ARE SUBJECT TO THE HIGHEST LEVEL OF SECURITY CHECKS of any category of traveler to the United States.

● U.S. security agencies screen the candidate, including:

- + ● National Counterterrorism Center/ Intelligence Community
- + ● FBI
- + ● Department of Homeland Security
- + ● State Department

● The screening looks for indicators, like:

- + ● Information that the individual is a security risk
- + ● Connections to known bad actors
- + ● Outstanding warrants/immigration or criminal violations

● *DHS conducts an enhanced review of Syrian cases, which may be referred to USCIS Fraud Detection and National Security Directorate for review. Research that is used by the interviewing officer informs lines of question related to the applicant's eligibility and credibility.*

● **This process is repeated any time new information is provided, such as a previously used name or different phone number. Otherwise, the process continues.**

4

DEPARTMENT OF HOMELAND SECURITY (DHS)/USCIS INTERVIEW:

● Interviews are conducted by USCIS Officers specially trained for interviews

● Fingerprints are collected and submitted (biometric check)

● **Re-interviews can be conducted if fingerprint results or new information raises questions. If new biographic information is identified by USCIS at an interview, additional security checks on the information are conducted. USCIS may place a case on hold to do additional research or investigation.**

Otherwise, the process continues.

5 BIOMETRIC SECURITY CHECKS:

- Applicant's fingerprints are taken by U.S. government employees
- ✦ ● Fingerprints are screened against the FBI's biometric database
- ✦ ● Fingerprints are screened against the DHS biometric database, containing watch-list information and previous immigration encounters in the U.S. and overseas.
- ✦ ● Fingerprints are screened against the U.S. Department of Defense biometric database, which includes fingerprint records captured in Iraq and other locations.

IF NOT ALREADY HALTED, THIS IS THE END POINT FOR CASES WITH SECURITY CONCERNS.
 Otherwise, the process continues.



6 MEDICAL CHECK:

- The need for medical screening is determined

THIS IS THE END POINT FOR CASES DENIED DUE TO MEDICAL REASONS.
 Refugees may be provided medical treatment for communicable diseases such as tuberculosis.



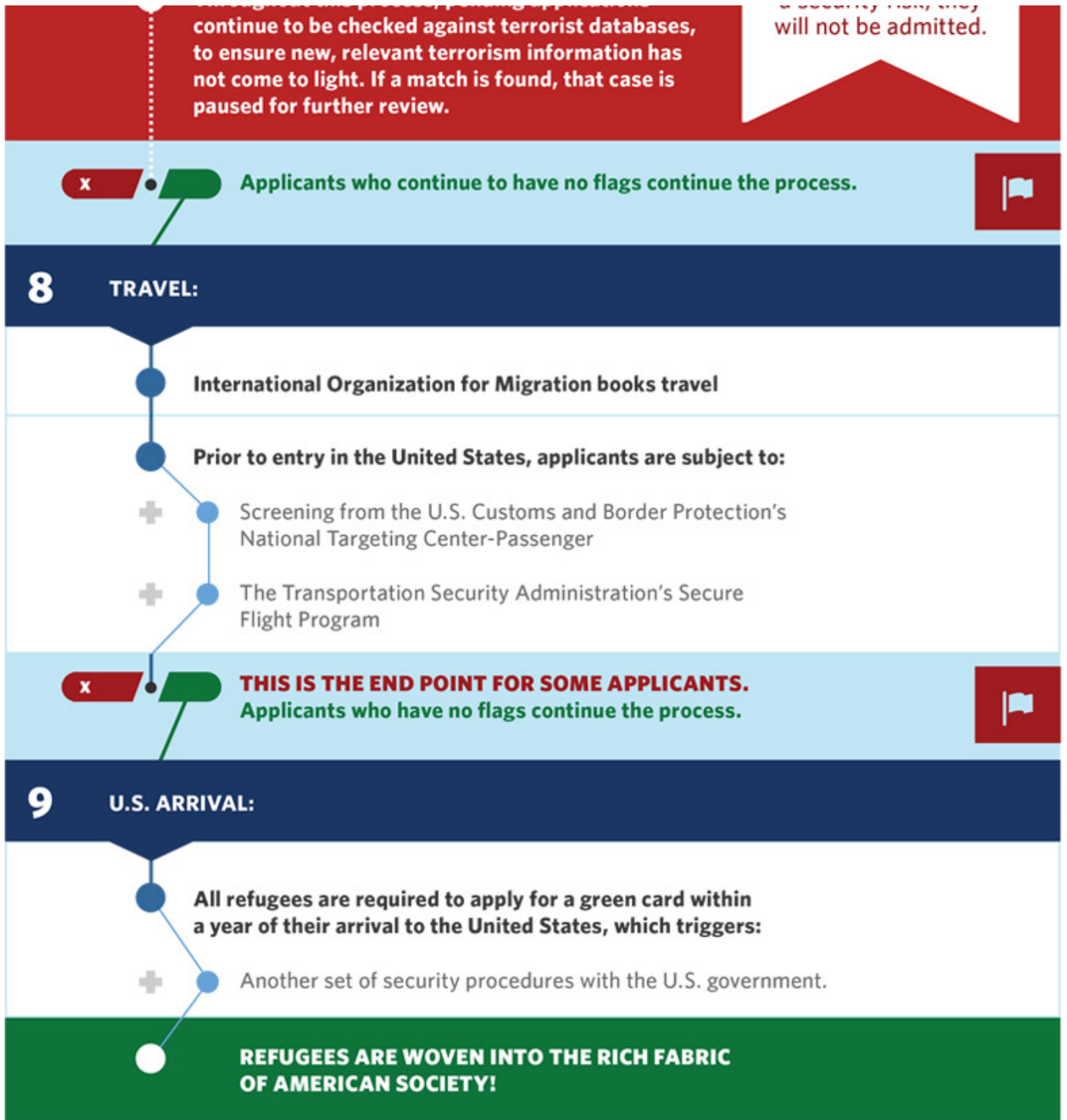
7 CULTURAL ORIENTATION AND ASSIGNMENT TO DOMESTIC RESETTLEMENT LOCATIONS:

- Applicants complete cultural orientation classes.
- An assessment is made by a U.S.-based non-governmental organization to determine the best resettlement location for the candidate(s). Considerations include:
 - ✦ ● Family; candidates with family in a certain area may be placed in that area.
 - ✦ ● Health; a candidate with asthma may be matched to certain regions.
- A location is chosen.

RECURRENT VETTING:

Throughout this process, pending applications

IF THERE IS DOUBT about whether an applicant poses a security risk, they



The Full Text of the Graphic:

The Screening Process for Refugee Entry Into the United States

1. **Many refugee applicants identify themselves to the U.N. Refugee Agency, UNHCR. UNHCR, then:**
 - Collects identifying documents

Recurrent vetting: Throughout this process, pending applications continue to be checked against terrorist databases, to ensure new,

- Performs initial assessment
 - Collects biodata: name, address, birthday, place of birth, etc.
 - Collects biometrics: iris scans (for Syrians, and other refugee populations in the Middle East)
- Interviews applicants to confirm refugee status and the need for resettlement
 - Initial information checked again
- Only applicants who are strong candidates for resettlement move forward (less than 1% of global refugee population).

relevant terrorism information has not come to light. If a match is found, that case is paused for further review. Applicants who continue to have no flags continue the process. If there is doubt about whether an applicant poses a security risk, they will not be admitted.

2. Applicants are received by a federally-funded Resettlement Support Center (RSC):

- Collects identifying documents
- Creates an applicant file
- Compiles information to conduct biographic security checks

3. Biographic security checks start with enhanced interagency security checks

- U.S. security agencies screen the candidate, including:
 - National Counterterrorism Center/Intelligence Community
 - FBI
 - Department of Homeland Security
 - State Department
- The screening looks for indicators, like:
 - Information that the individual is a security risk
 - Connections to known bad actors
 - Outstanding warrants/immigration or criminal violations

Refugees are subject to the highest level of security checks of any category of traveler to the United States.

- DHS conducts an enhanced review of Syrian cases, which may be referred to USCIS Fraud Detection and National Security Directorate for review. Research that is used by the interviewing officer informs lines of question related to the applicant's eligibility and credibility.

4. Department of Homeland Security (DHS)/USCIS interview:

- Interviews are conducted by USCIS Officers specially trained for interviews

- Fingerprints are collected and submitted (biometric check)
- Re-interviews can be conducted if fingerprint results or new information raises questions. If new biographic information is identified by USCIS at an interview, additional security checks on the information are conducted. USCIS may place a case on hold to do additional research or investigation. Otherwise, the process continues.

5. **Biometric security checks:**

- Applicant's fingerprints are taken by U.S. government employees
 - Fingerprints are screened against the FBI's biometric database.
 - Fingerprints are screened against the DHS biometric database, containing watch-list information and previous immigration encounters in the U.S. and overseas.
 - Fingerprints are screened against the U.S. Department of Defense biometric database, which includes fingerprint records captured in Iraq and other locations.
- If not already halted, this is the end point for cases with security concerns. Otherwise, the process continues.

6. **Medical check:**

- The need for medical screening is determined
- This is the end point for cases denied due to medical reasons. Refugees may be provided medical treatment for communicable diseases such as tuberculosis.

7. **Cultural orientation and assignment to domestic resettlement locations:**

- Applicants complete cultural orientation classes.
- An assessment is made by a U.S.-based non-governmental organization to determine the best resettlement location for the candidate(s). Considerations include:
 - Family; candidates with family in a certain area may be placed in that area.
 - Health; a candidate with asthma may be matched to certain regions.
- A location is chosen.

8. **Travel:**

- International Organization for Migration books travel
- Prior to entry in the United States, applicants are subject to:
 - Screening from the U.S. Customs and Border Protection's National Targeting Center-Passenger

- The Transportation Security Administration's Secure Flight Program
- This is the end point for some applicants. Applicants who have no flags continue the process.

9. U.S. Arrival:

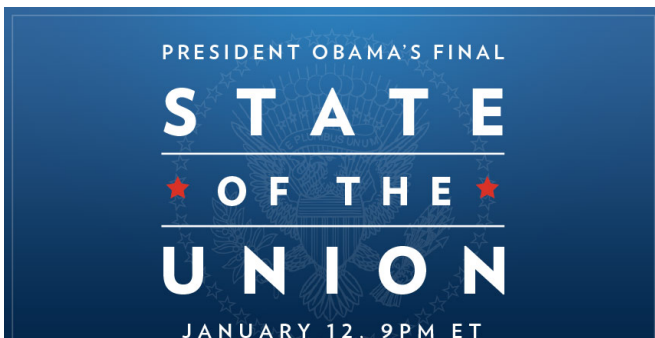
- All refugees are required to apply for a green card within a year of their arrival to the United States, which triggers:
 - Another set of security procedures with the U.S. government.
- **Refugees are woven into the rich fabric of American society!**

Amy Pope is Deputy Assistant to the President for Homeland Security

Correction: A previous version of the graphic and blog post stated in step 2 that the name of the RSC was the Refugee Support Center. This has been corrected to the proper name, the Resettlement Support Center.

Learn more:

- [How We're Welcoming Syrian Refugees While Ensuring Our Safety.](#)
- [Watch: Here's What the Refugee Screening Process Looks Like](#)
- [Here's What You Need to Know About Our Strategy to Defeat ISIL](#)



THE FINAL STATE OF THE UNION

Watch President Obama's final State of the Union address.



THE SUPREME COURT

Read what the President is looking for in his next Supreme Court nominee.



FIND YOUR PARK

Take a look at America's three newest national monuments.



- [**HOME**](#)
- [**BRIEFING ROOM**](#)
- [**ISSUES**](#)
- [**THE ADMINISTRATION**](#)
- [**PARTICIPATE**](#)
- [**1600 PENN**](#)

[En Español](#) | [Accessibility](#) | [Copyright Information](#) | [Privacy Policy](#) | [USA.gov](#)